

The News



v. 15, n. 12 December, 2011

Going for the Gold

Visit RMPH On The Internet At <http://rmpth.com>

Contents

- 1 **Annual Christmas Party**
- 2 About The News
- 2 Book Review
- 3 A Brief Story Of Leadville
- 3 RMPH 2012 Events Planning Session
- 3 Christmas Food Drive
- 5 **Find Of The Year Program**
- 7 Treasure Divers Find
- 7 Traveling By Air With Your Metal Detector(s)
- 8 Facts And History Of Silver
- 10 Calendar of Events
- 11 Calendars
- 12 Wyoming Treasures Waiting To Be Found
- 13 **Flatirons Mineral Club Rock & Mineral Show**
- 14 Metal Detector Enthusiast Finds Treasure
- 15 Dolphin's Laws Of Old Western Mines And Caverns
- 16 Trading Post
- 17 Colorado Mining History
- 18 2011 Schedule of Events
- 19 Contact List

"Peace is that brief glorious moment in history when everybody stands around reloading".

- Thomas Jefferson

All Aboard for the
RMPH Christmas Party and
Find of the Year Program
Wednesday, December 7, 2011
Note Special Start Time: 6:00 PM
Dinner at 6:30 PM Sharp!



This will be a **pot luck dinner**, so please bring your favorite meal item to share. Coffee and soft drinks provided by the club. Paper plates and plastic ware will also be provided.
See you at the RMPH Xmas Fandango!

Merry Christmas and
Happy Holiday Season

May the bottom of your pan be
covered with gold and may gold coins
appear under your detector coil.

About *The News*

The News is the official newsletter of the Rocky Mountain Prospectors and Treasure Hunters Club (RMPTH): our mailing address is P.O. Box 271863, Fort Collins, CO. 80527-1863.

Opinions expressed in *The News* are those of the authors and do not necessarily reflect those of the club or its members. Publication of information in *The News* constitutes no guarantee of accuracy. Use of any information found in this publication is at the sole risk of the user. Neither RMPTH, nor its coordinators, nor *The News*, nor its editors or contributors assume any liability for damages resulting from use of information in this publication.

Submissions

Articles, letters and short items of interest on prospecting, detecting and treasure hunting topics are welcome and encouraged. All items submitted for publication are subject to editing. Submittals for publication may be made in writing or, preferably, in ASCII text format on IBM-compatible disk. If you have questions about a submission, please contact the editor for information.

Copyright

Unless otherwise noted, other nonprofit groups may reprint or quote from any articles appearing in *The News* without prior permission, provided that proper author and publication credits are given and that a copy of the publication in which the article appears is sent at no cost to RMPTH at the above mailing address. Clubs wishing to exchange newsletters with RMPTH are invited to send a copy of their newsletter together with an exchange request.

Advertising

Classified advertising for topic related items is free for non-business ads. See the "Trading Post" section for donation pricing of camera-ready display ads. Donations for ad makeup from sketches, etc., are available on request.

About RMPTH

RMPTH is an independent nonprofit hobbyist social club, open to anyone interested in prospecting, detecting or treasure hunting. Its purpose is to provide an educational and social forum of mutual benefit for members. RMPTH holds a monthly meeting and conducts various field outings, as well as offers special presentations and seminars. Active participants have voting privileges. The monthly newsletter, *The News*, is readily available on the Internet. Persons wishing to receive the newsletter in hardcopy, mailed format are required to provide the amount of \$24 per year required to print and mail. Otherwise, no annual dues are charged as the social club functions strictly by donation. ✍



Book Review

by Paul Lange

The Klondike Fever, The Life and Death of the Last Great Gold Rush by Pierre Berton, MJF Books, New York, c. 1958, 457 pages, ISBN -13 978-1-56731-854-8.

Here is a book where all of the names mentioned are real, the events actually did occur and the speech is reproduced to the best of the author's knowledge as it was actually spoken. From 1896 to 1897, thousands ventured into the Klondike Valley in search of gold. The endemic disease was called Klondicitis or what is called gold fever or gold mania. This account brings the glory and folly of the Yukon to life in vivid and authentic detail. The author relies on first hand accounts of individual tragedies and success stories.

Pierre Berton, a noted Canadian journalist and historian, spent his teen years as a laborer in the Klondike mining camps so he should know what he is talking about. An individual we know by the name of Jefferson Randolph "Soapy" Smith has a chapter in the book. It turned out to be about the last chapter of his life. Besides "Soapy" you will meet dozens of extraordinary characters. There are a few maps and no pictures in the book but the read is worth the lack of pictures. Enjoy. ✍

A Brief Story Of Leadville

The story of Leadville is as varied as the search for gold and silver. It began its life as a placer gold camp in the 1860's, with the discovery of gold in California Gulch. A small mining camp sprung up, called Oro City, which nearly died within a decade. In 1874, with H. A.W. Tabor running the only general store, and tiny at that, geologist Alvin Wood and William Stevens bought out the local ditch company and ran the placer mines by themselves. They quickly noticed that the black sands in the bottom of the sluice were a bit unusual and of a different character, so they assayed the black sand and found it contained 40 ounces of silver per ton. They traced the sand to outcrop and began mining, and with that, came a rush. The year was 1877. Oro City was about to become Leadville.

Within a year, with the rush underway, the world began to learn about the rich silver deposits at Leadville. By 1879, the silver was pouring out. About that time the USGS was created, and under the guidance of Clarence King, skilled geologists were sent to the most important mining regions of the Country to begin a detailed geologic study that the Government hoped would lead to the discovery of ore deposits. Frank Emmons, a Harvard graduate, was put in charge of

the Rocky Mountain Region. Emmons had also attended the prestigious mining schools of Europe, the Freiberg School of Mines and the Ecole Imperiale des Mines in Paris. Emmons then worked with King and Arnold Hague on the Fortieth Parallel survey. In 1879 he proceeded to begin the study of Leadville, one of about a dozen spots chosen for the first work by the USGS.

Leadville is composed of at least six different mining districts historically, including: California [Gulch], Oro, Iowa Gulch, Carbonate Hill, Fryer Hill, Breece (Breeze), and Battle Mountain (not to be confused with Battle Mountain of Cripple Creek.)

Emmons completed the Geologic work at Leadville by 1881, though the Administration withheld publication for another 5 years, a problem that persists today. His work led to the rapid development of the ores and production of hundreds of millions of ounces of silver bullion. A subsequent report published by the USGS in 1925 was mostly begun by Emmons, who had died in 1911, and completed by two other geologists in later years (USGS Professional Paper 148.) This report is the benchmark of Leadville geology and ore deposits today.

Fred Holabir



RMPTH 2012 Events Planning Session

On Thursday evening, January 12 we will be holding a planning session to determine the agenda of club activities for the coming year. We will be meeting at the Loveland Perkins Restaurant, 2222 West Eisenhower. This location is on the south side of Eisenhower just east of the Wilson Avenue intersection. Participants are expected to order something from the menu to compensate for our use of their meeting room.

Now, if you cannot make this planning session please pass along your ideas to any club coordinator.

Let's make the coming year's activities the most interesting and productive for all!



Christmas Food Drive

This year, as in the past, we will be collecting non-perishable food items at the December meeting for the Larimer County Food Bank. Please bring your donation items to the Christmas meeting and they will be delivered to the Food Bank to share with our neighbors this holiday season.

Please make us strain to lift the collection boxes! Merry Christmas and Happy Holidays to all.



Jose Cuervo Christmas Cookies

1 cup of water
1 tsp baking soda
1 cup sugar
1 tsp salt
1 cup brown sugar
1 cup lemon juice
4 large eggs
1 cup nuts
2 cups dried fruit
1 bottle Jose Cuervo Tequila

Sample the Cuervo to check quality. Get a large bowl. Check the Cuervo again (to be sure it is of the highest quality, pour one level cup and drink). Put butter in bowl, turn on mixer and beat until fluffy. Add one table- spoon of sugar. Beat again. Drink ½ cup Cuervo to make sure it is still fresh. Turn off the mixerer thingy. Break 2 leggs and add to the bowl; chuck in the cup of dried fruit, pick the frigging fruit up off the floor. Mix on the turner. If the fried druit gets stuck in the beaterers just pry it loose with a drewscriver. Sample the Cuervo to check for tonsisticity. Next, sift two cups of salt, or something. Who giveshz a sheet. Check the Jose Cuervo. Now shift the lemon juice and strain your nuts. Add one table. Add a spoon of soda or somefink. Whatever you can find. Greash the oven. Turn the cake tin 360 degrees and try not to fall over. Don't forget to beat off the turner. Finally, throw the bowl through the window, finish the Cose Juervo and make sure to put the stove in the dishwasher.

CHERRY MISTMAS!!



"The Constitution is not an instrument for the government to restrain the people. It is an instrument for the people to restrain the government."

- Patrick Henry

Gold Glossary

Drift - In mining, a drift is defined as a horizontal pas- sageway that is excavated along a rich vein of ore. Hard rock mines usually use drifts to obtain the rich ore, though, some hard rock mines are open pit.

TREASURE HUNTER'S CODE OF ETHICS

I WILL *respect private property and do no treasure hunting without the owner's permission.*

I WILL *fill all excavations.*

I WILL *appreciate and protect our heritage of natural resources, wildlife, and private property.*

I WILL *use thoughtfulness, consideration, and courtesy at all times.*

I WILL *build fires in designated or safe places only.*

I WILL *leave gates as found.*

I WILL *remove and properly dispose of any trash that I find.*

I WILL NOT *litter.*

I WILL NOT *destroy property, buildings, or what is left of ghost towns and deserted structures.*

I WILL NOT *tamper with signs, structural facilities, or equipment.*

Find Of The Year Program

The Find of the Year Program will take place at the December meeting. Rules for the Find of the Year Program to are as follows:

Any member may submit any one find (find made during the year 2011) into each of the categories at the December meeting for voting as Find of the Year in that category.

The available categories are:

- Best Jewelry
- Oldest Coin
- Most Valuable Coin
- Best Bottle
- Most Raw Gold
- Largest Raw Gold
- Most Unique Find (Excavated)
- Most Unique Find (Non-Excavated)
- Rock, Gem, Mineral & Fossil

A certificate of award and a silver half dollar will be presented to each category winner.

Bring your finds and enter them into the December program!

L



More Bad News!

To save the economy, on December 30, 2011, Congress has ordered the immigration department to start deporting retired people instead of illegals in order to lower Social Security and Medicare costs. We are easier to catch, and will not remember how to get back home! See you on the bus. I wonder where we're going?

GOLD-N-DETECTORS

A METAL DETECTING & PROSPECTING CENTER



(303) 278-6622
802 Washington Ave.
Golden, CO 80401
E-mail: bill@goldendetectors.com

"Denver area's award winning hobby store, where we do what we sell."

- Metal Detectors
- High Bankers
- Rock Tumblers
- Books

- Gold pans
- Dredges
- Rock Picks
- Accessories

Open 9-6 Monday through Saturday
VISA, MasterCard, Discover

Property Wanted For Detector Hunt

RMPTH is looking for private property on which to hold an organized club detector hunt. Obviously, it would be most ideal if this property is known to have seen some past historical activity. If you have such property or know of someone who does, please contact Paul Lange or Rick Mattingly to plan a club field outing event.

Man Reported to Find \$500,000 Worth of Treasure in Storage Unit

A San Jose man needed no treasure map when he reportedly stumbled on to \$500,000 worth of gold and silver after bidding on an abandoned storage unit. The man, identified only as John, apparently paid \$1,100 for the unit only to see his blind investment turn into a goldmine after a number of rare coins and a few gold and silver bars were found in the blue Rubbermaid container.

The reported find, in Contra Costa County, was so unexpected that even though the auction was held by American Auctioneers, the subject of A&E's Storage Wars, there were no cameras present when the cache was discovered.

Even without cameras Laura Dotson, the co-owner of American Auctioneers along with husband Dan, still said she was delighted.

"It helps, it solidifies what we're doing in the business," Dotson told ABCNews.com. "It shows hope that with all these units, that there is treasure to be found."

Although the buyer wants to remain anonymous, Dotson said he called her after getting the gold and silver appraised. According to Dotson, the first thing he said was, "Wow, this is a wonderful life."

In recent years storage unit auctions have gained wide-spread recognition after becoming reality fodder for shows like Storage Wars and Spike TV's Auction Hunters.

In California, where American Auctioneers is based, a storage unit is available for auction if rent has not been paid in three months. Bidders are able to view the storage unit from outside for five minutes to glean what they can, and then the bidding starts. While some units are worth little, the possibility of a big payoff draws in participants who are willing to take a chance.

John Cardoza of Storage Auction Experts, which was not involved in the auction, told ABC News that for people who know what they're doing, "Six out of seven units can make money." However, he stresses that the chance to make half a million dollars off a \$1,100 bid is a bit rarer. "I hear similar stories about once a year," said Cardoza.

According to the San Francisco Chronicle, the unit was owned by a recently deceased elderly woman. Cardoza says that since the storage units must be listed in the paper prior to the auction, some bidders use names to try to decipher what's in the unit. "What some people do is, they look at the names. If it's Ethel or Myrtle, it sounds older," said Cardoza, who says an older person may have more collectibles than a younger person.

While the coins were apparently found in the unlikeliest of treasure chests -- a Rubbermaid container -- it was said to have been heavy enough that three men had to carry it out.

Dotson says the plastic container initially piqued the buyer's interest, although for more pragmatic reasons. "He said that he liked it was in [plastic] and clean and easy to move," said Dotson. "It's a chance of a lifetime."

<http://news.yahoo.com/man-reported-500-000-worth-treasure-storage-unit-200501811.html>

Thanks to Bud Yoder



Troy Shadow X5

Treasure Divers Find

\$500,000 Gold Ring From Spanish Sunken Ship

Published June 24, 2011 | Fox News Latino

Divers searching for treasure off the coast of Florida have found an antique gold ring worth \$500,000 from a 17th Spanish ship.

The ring is believed to be from the Nuestra Senora de Atocha that sank off the Florida Keys during a 1622 hurricane.

piece has a rectangular cut emerald estimated at 10 karats.

Divers from Mel Fisher's Treasures were seeking the sterncastle of the Atocha when they found the ring Thursday 35 miles Key West.

A spokesperson said the ring's estimated value is based on the stone's 2.7- by 2.5-centimeter size and the value of other from Atocha.

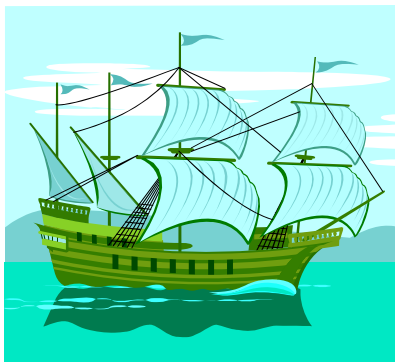
Also found were two silver spoons and other artifacts. A 40-inch gold rosary was found in March and a gold bar in April.

Based on reporting by the Associated Press.

[Handwritten mark]



Spectacular Ring Find



Traveling By Air With Your Metal Detector(s)

by Lee Wiese

The question that frequently comes up is: Can I take a metal detector on an airplane? Yes you can but you should follow some basic steps and guidelines.

One thing to keep in mind is that the electronics on any device whether it is a metal detector or some other electronic device is very delicate and must be treated with great care. I usually travel with three detectors and all the related detecting gear. We do both competition and beach detecting with different detectors and equipment required for each detecting situations.

The following guidelines have been very successful for me so they should work for anyone.

The first thing I do is breakdown all the detectors into the greatest number of components as possible – this means if possible all electronics are removed from the handle assemblies. All the handles are broken down into three sections with the coils removed. I also gather up all the associated tools that will be needed such as headphones (always carry a spare), target recovery tools (scoops, probes, a knife), recovery pouch, gloves, knee pads, search coils (2 different size coils for one of the detectors) and batteries. (NOTE: If batteries are removed from equipment, black electric tape the ends over per TAS requirements).

Next select the carry on luggage that you will use to house the detector electronics, the most expensive and delicate part of the metal detector. My primary piece of luggage for this purpose is a 20"x13"x8"soft expandable carry on with rollers (see airline guidelines at the end of the article). You can usually get up to five sets of electronics in this luggage size plus a couple of coils and a headset or two. Wrap the electronics in light towel-like material and pack with care so as not to cause damage to any detector display during transportation. If by chance you should be required to check the luggage it should be packed to handle the beating it will get by the airlines. (NOTE: No tools, metal probes or other sharp objects in the carry on, I suggest leaving out the handle assembly.)

(Continued on page 9)

Facts And History Of Silver

Often considered the “poor man’s gold” silver has been climbing the investment and demand charts since its discovery thousands of years ago in Anatolia, now modern day Turkey. Silver’s unique properties make it ideal for thousands of applications found in every day life.

Silver is:

- The best conductor of electricity of all metals
- The best conductor of heat of all metals
- The most reflective of metals
- A powerful anti-bacterial & anti-viral agent
- Malleable and ductile
- Valued for its beauty
- Silver is found today in mines around the world; the top producing mining countries are Peru, Mexico and China.

HISTORY OF SILVER MINING

- 3000 BC The first major silver mines were discovered in Anatolia, modern day Turkey.
- 1st C. AD Roman discoveries developed Spain into a major silver producer.
- Early 1500s After Columbus’ New World expeditions, the discovery of huge, prolific silver deposits in Mexico, Peru and Bolivia changed the focus of silver mining and enriched the Spanish Empire for 300 years.
- 1500 – 1875 Approximately 1.5 billion ounces mined in Mexico with the majority produced during the 1700’s.
- 700s The backbone of the Spanish Empire was the one billion ounces of silver produced from Veta Madre (The Mother Vein) in Guanajuato Mexico (Endeavour Silver has mines hosted in the Veta Madre) .
- 1857 Silver mining became an important industry in the State of Nevada (The Silver Sate) when the fabled Comstock Lode was discovered.
- 1859 - 1877 Comstock yielded silver and gold with a value approaching \$400 million, the equivalent of more than \$500 billion today.
- 1900 – 1920 50 percent expansion in global production to about 190 million troy ounces annually spurred by discoveries in several countries including Canada, the United States and Mexico.
- 1921 – Present Improved techniques in ore separation allowed for concentration of silver with lead, zinc and copper. The explosion in production of these various base-metal sources has led to an increase in both silver output and silver usage.
- 3000BC - Present All the silver ever mined would fit in a 55 metre cube.

HISTORY OF SILVER AS CURRENCY

- CA 2500 BC Silver first introduced into Egypt and was considered more valuable than gold.
- 475 BC China was the first country to monetize silver.
- 775 AD “British Pounds Sterling”: in approximately 775 AD the Saxon kingdoms issued silver coins known as “sterlings”, 240 of them being minted out of one pound of silver. Large payments were reckoned in “pounds of sterling” later shortened to “pounds sterling.”
- 1072 After the Norman Conquest, the pound was divided for simplicity of accounting into 20 shillings and 240 pence or pennies.
- 1497 Spanish “Pieces of Eight” were coins first struck in 1497 containing a high silver purity and weight. They were the basis of the monetary system of the Spanish Empire and were widely circulated around the world. They were accepted as legal tender in the US until 1857.
- 1600’s - 1900’s The Mexican Peso evolved into one of the world’s strongest and most widely accepted currencies due to its silver content.
- 1800s By the mid 1800s, China through trade and mercantilism, was in possession of 50% of the world’s above ground silver. The British sold opium to China in exchange for tea, silk and silver – a factor in the Opium Wars between Great Britain and China during the mid -1800s.
- 1930s Silver was used as China’s official currency until the 1930s.

Endeavour Silver Corp.
301-700 West Pender Street
Vancouver, B.C.
Canada V6C 1G8
Ph. 604.685.9775
TF: 1 877.685.9775
Fax: 604.685.9744
www.edrsilver.com



Silver Ore from Creede Colorado

(Continued from page 7)

The next step is to select a piece of luggage for all the related metal detecting gear. This gear will consist of coils, headphones, handle assemblies, recovery tools, batteries, etc. You must keep in mind the weight factor (50lbs per check in piece of luggage) and the cost of checking luggage these days. Here, I use 28"x18"x10" expandable piece of soft luggage. This should easily handle all the associated detecting gear and provide room for personal items.

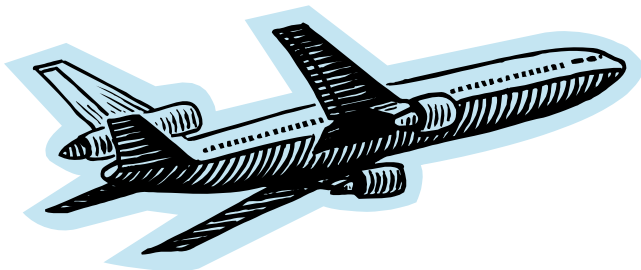
My recommendation is to also provide a sheet of paper or two in each piece of luggage explaining to the TSA agent who may check the luggage what this strange looking gear (pictures on the paper explain a lot) is all about. However, the TSA agents are becoming accustomed to seeing such gear pass through their X-ray equipment so this may not be necessary. Recently, I started to carry the detectors owner's manual in the carry on luggage just in case I need to explain what the gear is to the TSA agent.

By following these steps and guidelines you should get your metal detectors safely to your destination without any problems.

Airline Guidelines: Carry on luggage guidelines for flights on most US Domestic Flights, Transatlantic Flights, Flights within Europe, Asia & South Pacific, And International South American Flights. The guidelines for one carry-on bag is (L"+W"+H") which must equal 45 inches total, and the luggage measurements are 22"+14"+9" =45" and the bag must weigh less than 40 lbs. Some US Discount Airlines require carry on luggage under 41" (20"+13"+8") and weigh less than 40 lbs.

TSA Battery Suggestion: Keep batteries and equipment with you or in carry-on baggage - not in your checked baggage! In the cabin, flight crew can better monitor conditions, and have access to the batteries or device if a fire does occur.

Metal Detecting Hobby Talk
<http://www.mdhtalk.org>



Treasure Map Bares \$100,000 Golden Cache

The Hartford Courant - Hartford, Conn.
Date: Mar 31, 1960

MOUNT PROSPECT, Ill. (AP)-- Gold pieces worth at least \$100,000 buried in the backyard of a Chicago investment broker before his death have been spaded up with the aid of a treasure map.



"THE CORNER"

COINS & JEWELRY INC.

JOHN & CAROLE ANDERSEN

- Gold & Silver Investments
- Gold & Silver Bullion
- Estate Appraisals
- Custom Jewelry
- Estate Jewelry
- Jewelry Repair
- Rare Coins

1-970-482-7759

1-800-348-8756

**John & Carole say Hi
come by to see us!
426 Remington (at Mulberry)
Fort Collins, CO 80524**

Calendar of Events

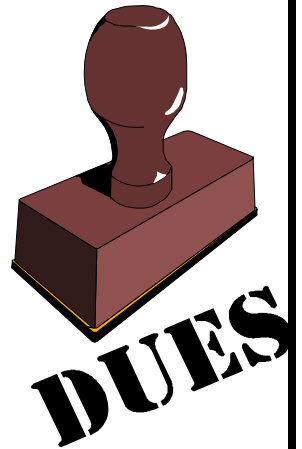
December Meeting
Wednesday, December 7. We will meet at the Pulliam Building in downtown Loveland at 6:00PM. Refer to the adjoining map for directions.

Meeting Agenda
6:00 - 6:30 Announcements
6:30 - 7:30 Pot Luck Dinner
7:30 - 7:45 Break
7:45 - 9:00 **"Annual Find Of The Year Voting & Awards"**.

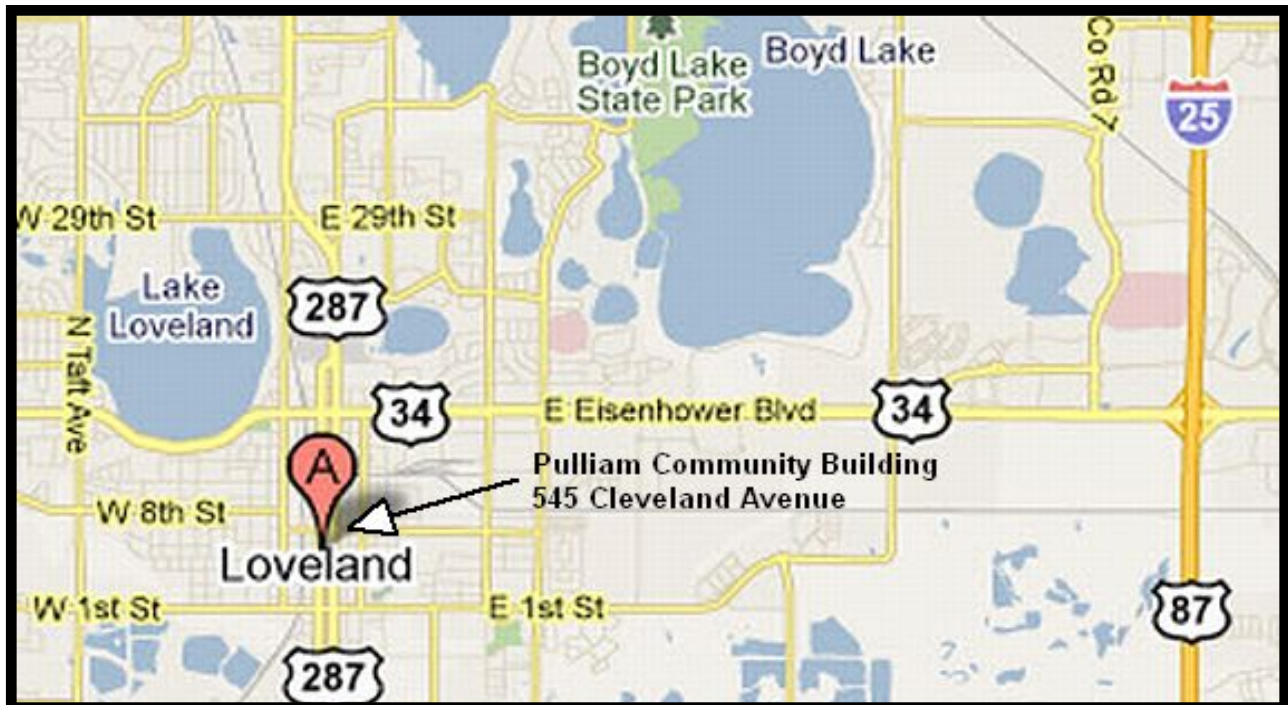


RMPTH DUES

RMPTH is an unincorporated Social Club with no income generated. All expenses are covered by donation. Members are requested to consider donating a minimum of \$1.00 at each monthly meeting to cover club expenses.



MAP TO THE MEETING PLACE
Pulliam Community Building
545 Cleveland Avenue, Loveland, Colorado



Directions:

The Pulliam Community Building is situated on the west side of Cleveland Avenue in Loveland, Colorado. Park at the rear of the building (west side). Entry to the meeting room is from the doorway on the south side of the building (not the main entrance on Cleveland Avenue!).

December 2011

Sun Mon Tue Wed Thu Fri Sat

				1	2	3
4	5	6	7 RMPH Xmas Party & Find of the Year Program 6:00P	8	9 Flatirons Mineral Club Rock & Mineral Show	10 Flatirons Mineral Club Rock & Mineral Show
11 Flatirons Mineral Club Rock & Mineral Show	12	13	14	15	16	17
18	19	20	21	22	23	24 Christmas Eve
25 Christmas Day	26	27	28	29	30	31 New Year's Eve

January 2012

Sun Mon Tue Wed Thu Fri Sat

1 New Year's Day	2	3	4 RMPH Planning Session 6:00P RMPH Meeting 7:00P	5	6	7
8	9	10	11	12 RMPH 2012 Plan- ning Session 6:00pm	13	14
15	16	17	18	19	20	21
22	23	24	25	26	27	28
29	30	31				

RMPH Field Outing Statement

NOTE: The Coordinators and participants stay in touch and continue to review and plan upcoming presentations and outings for the year on a monthly basis. Our editor Rick Mattingly needs timely event information for each issue of *The News*. Please get information about any particular event to him by the 15th of the month to meet the printing deadline for the next issue.

Planned trips, outings, activities, and meeting programs are in the newsletter and on line at the clubs website. Planning is a work in progress and additional outings and activities are added and sometimes deleted on an ongoing basis. Events planned in the upcoming month are emphasized to the attendees at the monthly meetings. Contact the Presentations Coordinators or Editor if you have any suggestions or ideas throughout the year for fieldtrips, outings, and programs.

The best made plans may change at the last minute due to the illness of the Trail Boss, weather, land access, vehicles breaking down, wrong meeting sites, etc. Please be understanding of extenuating circumstances and contact the coordinator or Trail Boss of a specific event if there is any question of an event being cancelled or changed at the last minute.

A Complex Problem

It isn't the Gold - It's Water, Heat and Cold!

Regrettably, the dome of our Capitol has fallen into serious disrepair. The cast iron enclosure of the dome and drum, painted gray to match granite used elsewhere in the structure, has deteriorated over the past hundred years due to water infiltration and the intense freeze-thaw cycle of the Colorado climate. The observation deck, the unforgettable field trip destination for generations of Colorado's school children, has been closed to them, as well as to all visitors, since 2007 due to the danger of falling cast iron. Engineering experts have declared the deteriorated condition of the structural metal fasteners holding the enclosure together to be a significant hazard to the building and its occupants. The experts have concluded that, "the entire dome will require extensive work to repair current damage and preserve the feature for future generations."

Colorado Preservation Inc is proud to lead the citizen's campaign to raise the funding necessary to restore our Capitol Dome. By helping meet the goal of \$8 million set for us by the Legislature, you are not only saving the "People's House", you are also helping to save the State Historical Fund for all Coloradans.

Please make your check payable to:
CAPITOL DOME RESTORATION FUND
Mail to:
Colorado Preservation Inc.
2100 Downing Street, Suite 300
Denver, CO 80205

Thanks to The Qwill Newsletter September, 2011

Wyoming Treasures Waiting To Be Found

The following are rumors which need follow-up.

Bandits' loot hidden near old Fort Laramie has never been found.

The Jack Slade gang hid treasure in Slade Canyon near Sunrise, Platte County.

\$37,000 in stagecoach holdup loot was hidden in 1878 near Newcastle, Weston County, and remains missing.

The coins of an Army paymaster were buried at Smoot, Lincoln County, to avoid capture by Indians.

"Teton" Jackson buried his loot at Cache Creek near Jackson Hole, possibly the same treasure as given in a report of \$150,000 in stolen gold hidden in the area.

In the vicinity of Baggs, Carbon County, outlaw treasure is hidden.

Gold coins were found at Rock River, Albany County, in 1916, but are believed to be just a small part of a treasure that is still unlocated.

Train holdup booty secreted near Rock Springs, Sweetwater County, remains untraced.

Stagecoach treasure near Newcastle, Weston County, has been lost for decades.

<http://www.coinworld.com/newcollector/statetreasures4.asp>



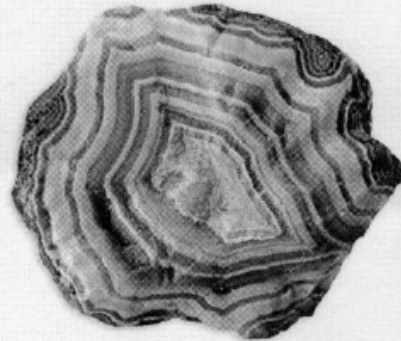
DECEMBER 9TH*, 10TH, & 11TH

Flatirons Mineral Club

Rock & Mineral Show

- Displays
- Demonstrations
- Kid's Area†
- Grab Bags†
- Gold Panning
- Classes & Speakers
- Hourly Door Prizes
- Grand Prize

†Proceeds go to Scholarships



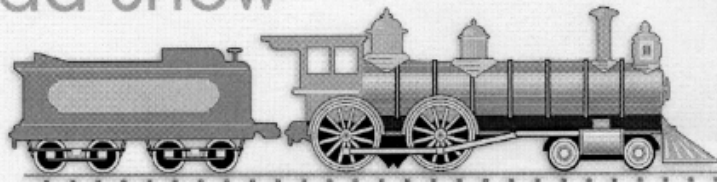
Dealers selling: rocks, jewelry, fossils, minerals, gems, and tools

website: bcn.boulder.co.us/community/fmc • Contact: Gerry Naugle 303-591-2830

Boulder Model Railroad Club 34th Annual

Model Railroad Show

- Model RR Displays
- Kids' Layout
- Operating Layouts
- \$1 Raffle Tickets to Win a Layout



Vendors for books, videos, apparel, model trains & railroadiana

website: www.bouldermodelrailroadclub.org • Contact Roy Johnson 303-349-7006

PLACE:

Boulder County Fairgrounds

Hover & Nelson Roads, Main Exhibits Building, Longmont, CO

DATES & TIMES:

Friday, December 9th* 10am-6pm

*Rock and Mineral Show only

Saturday, December 10th 9am-5pm

Sunday, December 11th 10am-5pm

ADMISSION:

Friday \$3 • Saturday \$5 • Sunday \$5

Ages 12 & Under: Free with paying adult



Find us on:
facebook.

Metal Detector Enthusiast Finds Treasure

Published on Sunday 13 November 2011

A metal detection enthusiast scouring the soil around Thurcroft unearthed a 14th century gold ring studded with a ruby and an emerald, an inquest heard.

Metal finishing plant worker Paul McEvoy, 44, found the medieval finger ring just six inches beneath the surface.

He had been using his metal detector to search a stubble field in Thurcroft.

Mr McEvoy, from Dinnington, told the Rotherham hearing: "I thought I had dug up a squash bottle top but it turned out to be a ring."

He said on the day of his discovery he had been metal detecting for an hour - and had otherwise found only modern spoons, nails and a buckle.

The find, made in July 2009 was verified by Beverley Nenck from the Department of Pre-History at the British Museum in London.

Landowners Judith and Hedley Leaning were at the inquest and said the land - which had been left fallow after

growing wheat - was farmed by Richard Crowe from Tickhill.

It is not yet known how valuable the ring is or where it will end up.

Assistant deputy coroner Jonathan Godfrey declared the ring was officially 'treasure trove' under the Treasure Act.

He said: "I am satisfied that the item that was found by Mr. McEvoy was a gold finger ring with two stones, one green and one red."

"Having regard to its age and that it is gold it is one of treasure."

Afterwards Mr. McEvoy, a member of the Worksop-based Dukeries Metal Detecting Society, said the ring was now in the hands of Retford Museum.


He said: "I would rather have it back eventually after it is valued."

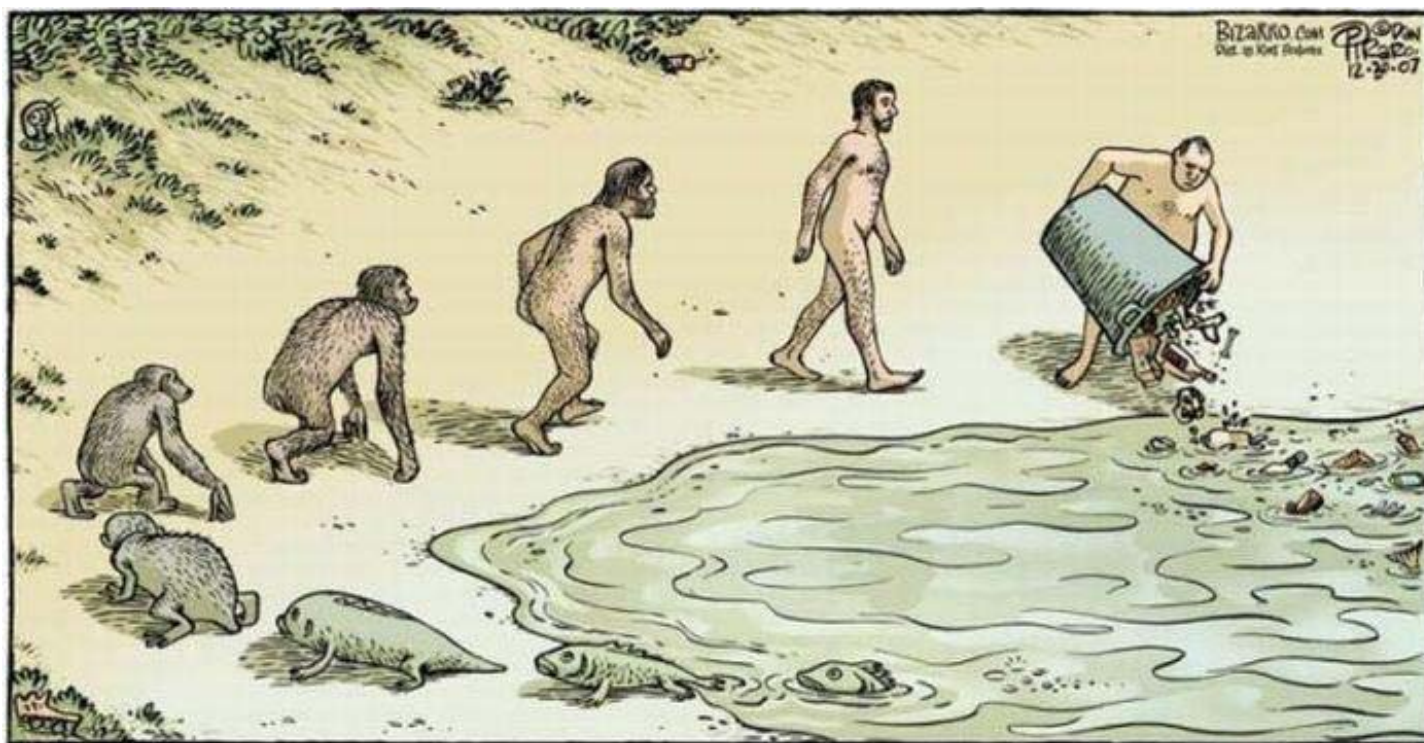
"I have no idea how much it is worth at the moment."

"I have been metal detecting for 10 years in the local area just as far as Newark and Woodsetts."

"I have found ancient coins before but nothing like this."

"I knew it was something special straight away."

"I just rubbed the soil off the ring and saw the two stones glistening." 



Dolphin's Laws Of Old Western Mines And Caverns

LAW I: "Inaccessible caverns fill with gold automatically with the passage of time. The greater the lapse of time and the more inaccessible the cavern, the larger the amount of gold."

LAW II: "The total value of loot in an inaccessible treasure horde will increase by at least thirty percent with each re-telling of the original legend---regardless of inflation or the current world price of gold."

LAW III: "The best ore is always to be found in flooded, abandoned old mines. The last miners to work in the mine are always willing to swear on a stack of Bibles that they stumbled onto a great lode of gold on the very same day the mine superintendent ordered the mine to be closed."

LAW IV: "If you wait long enough, an inaccessible treasure cavern will generate an iron door over its concealed entrance and the gold will supplement itself with rusting Spanish armor, the bones of numerous Indian slaves, and a solid gold (or crystal) statue* of the Virgin Mary."

Note: *In other parts of the world a solid gold statute of Buddha will do nicely.

The above laws are inspired by William B. Beatty's famous "Hunt's First Law of Mineral Resources"
<http://www.ldolphin.org/hunts.html>





Santa Claus in January

Gold Glossary

Drywasher - A common desert mining tool. The drywasher is like a highbanker but lacks the need for water. A drywasher operates by the use of wind. The light junk material is blown off the top of the sluice in the drywasher and the gold stays on the bottom. The sluice riffles in a drywasher are backwards for better recovery.

Gold Facts

Symbol: AU
 Atomic Number: 79
 Atomic Weight: 196.967
 Melting Point: 1063° (1945° F)
 Specific Gravity: 19.2
 MOH's Scale of Hardness:
 2.5 - 3

Karat

24K = 100% Pure Gold
 18K = 75% Pure Gold
 14K = 58% Pure Gold
 10K = 42% Pure Gold

Troy Weights

1 grain = 0.0648 grams
 24 grains = 1 penny weight (DWT) = 1.552 grams
 20 DWT = 1 ounce =
 480 grains = 31.10 grams

**YOUR
 ADVERTISEMENT
 COULD BE HERE!
 Call Rick Mattingly
 at 970-613-8968
 or rickmatt@q.com**

Trading Post

FOR SALE: Keene High Banker, includes stand, hose and 5 HP Briggs and Stratton pump. Great condition, \$900.00 or Best Offer. Contact Cindy Bone at (970) 669-8247.

FOR SALE: Prospecting equipment: 4" Dredge and more plus Whites VSAT Gold Detector. Contact Homer at (970) 224-4244

WANTED: Federal or state duck stamps; mint or used. Contact John Hart at (307) 778-3993.

NOTICE: As part of our community outreach, Metropolitan State College of Denver, Dep. of Earth & Atmospheric Science, Professional Services Division offers **FREE MINERAL SPECIMEN IDENTIFICATION**. Participants will aid in the education of future Geoscientists! Details and specimen submittal forms with instructions can be downloaded from <http://college.earthscienceeducation.net/MINPET/MINID.pdf> Uwe Richard Kackstaetter, Ph.D. (Dr.K) Assistant Professor of Geology Department of Earth & Atmospheric Sciences Metropolitan State College of Denver Office: SI2014 (303) 556-3070 kackstae@mscd.edu

NOTE:

Purchase arrangements are between the buyer and seller only and involves no financial benefit to RMPH.

Treasure Hunters Discover Antique Gold Chain off Florida Coast

March 25, 2011 08:35 PM EDT

Divers from Mel Fisher's Treasures in Key West have recovered an antique gold chain believed to be from the Nuestra Señora de Atocha, which sank during a 1622 hurricane. In 1985, these same treasure hunters had previously found more than \$450 million in artifacts from the wreck.

Experts are evaluating the 40-inch chain, believed to be centuries old, and which may be worth as much as \$250,000. The divers were searching for a part of the 17th century Spanish galleon that has not yet been found when they made the discovery.

Yahoo News reports that the chain has 55 links, and holds an enameled gold cross and a two-sided religious medal with the Virgin Mary and a chalice engraved on it. If it is indeed from the Nuestra Señora de Atocha, add another quarter of a million to the total booty for the Fisher crew.

It must be gratifying to recover such ancient treasure from shipwrecks. Just the word "treasure hunters" might raise a few skeptical eyebrows as a legitimate line of work, but in this case, Mel Fisher and his crew might once again be laughing all the way to the bank.

About Trading Post

The News runs classified ads in Trading Post for three consecutive issues. Trading Post ads for topic related items up to 10 lines (or 70 words) long are free. To place an ad in Trading Post contact Rick Mattingly at (970) 613-8968 evenings or e-mail at: rickmatt@q.com

Commercial Advertising Specifications (Monthly Donation Rate)

Full Page (8 1/2" X 7")	\$30
Half Page (3 1/4" X 7")	\$20
One Third Page (3" X 4")	\$15
Business Card (2 3/4" X 1 1/2")	\$ 5

Ads must be received by the 15th of the preceding month. Contact Rick Mattingly for information on this service at (970) 613-6968 evenings or e-mail at: rickmatt@q.com.

All mistakes and misspellings were intentionally made so that you could have the pleasure of finding them.

HUSH PUPPIES

A Southern U.S. specialty consisting of balls of cornmeal batter, seasoned with chopped onion, garlic, etc. and fried.

The name supposedly originated when Southern hunters were gathered about the fire to cook the evening meal, and the dogs would start barking and begging for food. The cook would drop bits of corn meal batter and toss them to the hungry dogs with the admonition, "hush, puppy!"

Trailer Life Directory

WEEKEND & SMALL-SCALE MINER'S CODE OF ETHICS

I WILL respect other prospector's claims and not work those claims without the owner's permission

I WILL have on-site all necessary permits and licenses

I WILL build fires in designated or safe places only, and in accordance with current State and Federal guidelines

I WILL be careful with fuels and motor oils and be cognizant of their potential destructive effect on the environment

I WILL remove and properly dispose of all trash and debris that I find - **I will not litter**

I WILL be thoughtful, considerate and courteous to those around me at all time

I WILL appreciate and protect our heritage of natural resources, wildlife, fisheries and private property, and respect all laws or ordinances governing prospecting and mining

I WILL NOT remove stream bank material, destroy natural vegetation or woody debris dams, nor discharge excess silt into the waterways

I WILL NOT refuel motorized equipment in the stream

I WILL NOT allow oil from motorized equipment to drip onto the ground or into the water

I WILL NOT prospect in areas closed to prospecting and mining



I want you to volunteer
to help your club!

Offer Your Assistance To Any
Of Our Program Coordinators

Colorado Mining History

Georgetown-Silver Plume

Georgetown / Silver Plume is on U.S. 6 and 40-42 miles west of Denver. The steep grades in this area are treacherous. Georgetown / Silver Plume is in west part of county. This district consisted of 25 square miles and had a total production of around 145,000 gold ounces. Area mines produced a by-product of gold. Southwest of Georgetown / Silver Plume 6 miles is the Argentine or west Argentine district. Just east of the Continental Divide, this district had a total production of 25,400 gold ounces. Along Leavenworth Creek, and on the southeast side of Leavenworth Mountain on the southeast slopes of McClellan Mountain, at head of Leavenworth Creek, 6 mi. farther southwest, many area mines produced lode and by-product gold. On Kelso Mountain, area mines produced lode gold. The Belmont Silver Lode and the Baker Mine were the largest district producers of lode gold.

Jamestown

Jamestown is in the Central district. Nine miles northwest of Boulder there were many area mines. Lefthand Creek, north of Gold Hill, Bummers Gulch, Coon Trail, North Beaver and South Boulder Creeks, southeast of Caribou contain placer gold. James Creek above Jamestown contains placer gold. Central Gulch, west of Jamestown contains placer gold. Upper Fourmile Creek, northwest of Sugarloaf contains placer gold. It had a total production of 207,000 gold ounces. There are many area mines that produced gold in pyrite and telluride minerals. The Jamestown, Gold Hill and Ward area mines all produced lode gold.

Nederland

North of Nederland on Route 160 toward Ward, turn east onto the Sugarloaf - Sunset road for 7 miles to the Oregon Mine. This mine produced gold in sulfide ores.

Ward

The Ward district is 9-13 miles northwest of Boulder. It covered 12 square miles in headwaters of Lefthand and Fourmile Creeks. The old camps of Sunset and Copper Rock, more than 50 lode mines in area, had a total production of 172,000 ounces of lode gold. The Niwot and Columbia mines were the largest producers of lode gold. In east part of district, many mines produced gold in tellurides.



Rocky Mountain Prospectors and Treasure Hunters Club

2011 Schedule of Events

Month	Meeting Program	Trip/Activity
January	Club Business and Open Forum	<i>No Trip/Activity Scheduled</i>
February	Love Token Coin Presentation By Rick Mattingly	<i>No Trip/Activity Scheduled</i>
March	Update on Mining Laws, Permits and Land Access for the 2011 Prospecting Season, What the Future Looks Like. By Ben Higley, President, Gold Prospectors of Colorado	GPS, Compass & Map Clinic
April	Gold and Platinum in Wyoming By Wayne Sutherland, WGS	Clear Creek Gold Panning
May	Detecting Presentation By Tom Warne	'Let's Go Gold Panning On The Arkansas' Event Prospecting, Detecting & More Clinic at Lions Park - Advertised and Open to the Public
June	Gold Nugget Shooting Presentation By Rick Mattingly	Nugget Shooting Clinic at Lions Park Eldora Ski Resort Detector Outing
July	Gold Refining Presentation By David Emslie	Manhattan Ghost Town Detector Outing Gold Nugget Shooting Outing
August	Crack & Crevasse Prospecting By Bryan Morgan	Ames Monument, Vedauwoo & Wyoming State Museum Tour
September	Meteorite Presentation By Dr. Robert Brownlee	Annual Coin & Prize Hunt Colorado Mineral & Fossil Show—Denver Lucite Hills Wyoming Gem Outing
October	Bottle Hunting Presentation By Rick Mattingly	Off-Road Detector & Cache Hunt
November	Annual "Show & Tell" & Silent Auction	Local Detector Outing
December	Annual Find of the Year Awards & Christmas Party	Flatirons Mineral Club & Model Train Show

Good Hunting in 2011!

Rocky Mountain Prospectors & Treasure Hunters Contact List

RMPH Coordinators		Home	E-Mail
Coordinator	Paul Lange	1-970-663-5776	plange50@msn.com
Coordinator	Robert Crain	1-970-484-6488	_____
Coordinator	Bryan Morgan	1-970-416-0608	brymorg@frii.com
Coordinator	Rick Mattingly	1-970-613-8968	rickmatt@q.com
The News Staff			
Editor-in-Chief	Rick Mattingly	1-970-613-8968	rickmatt@q.com
Assistant Editor	Dick French	1-970-482-2110	dickyf99@comcast.net
Internet Web Site			
Web Master	Rick Mattingly	1-970-613-8968	rickmatt@q.com
Volunteers/Coordinators			
Find of the Month	Joe Johnston	1-303-696-6950	cjoej1@peoplepc.com
	Betsy Emond	1-970-218-0290	_____
	Paul Mayhak	1-970-482-7846	pjmcolo@q.com
Presentations	Paul Lange	1-970-663-5776	plange50@msn.com
	Johnny Berndsen	1-970-667-1006	johnnyberndsen.com
Club Historian	Peggy Stumpf	1-307-632-9945	circlestar@yahoo.com
Club Librarian	Joe Johnston	1-303-696-6950	cjoej1@peoplepc.com
Panning Demos	Bryan Morgan	1-970-416-0608	brymorg@frii.com
	Darrell Koleber	1-970-669-2599	gutshot1016@yahoo.com
Setup & Refreshments	<i>Volunteer Needed!</i>	_____	_____
Door Prize	Tom Warne	1-970-635-0773	golddigger48@msn.com
	Jacob Wootton	1-970-980-6016	jacob-wootton@yahoo.com
	Johnny Berndsen	1-970-667-1006	_____
General Information Contact: Paul Lange at 1-970-663-5776			
Visit RMPH on the Internet at: http://rmpth.com			

Let's Go For The Gold !

The News

Rocky Mountain Prospectors &

Treasure Hunters Club

P.O. Box 271863

Fort Collins, CO. 80527-1863

DECEMBER, 2011 ISSUE